

MONTHLY MEMBERSHIP PROGRESS REPORT

District 4 C6

Results as of: 11/30/2024

GMT:

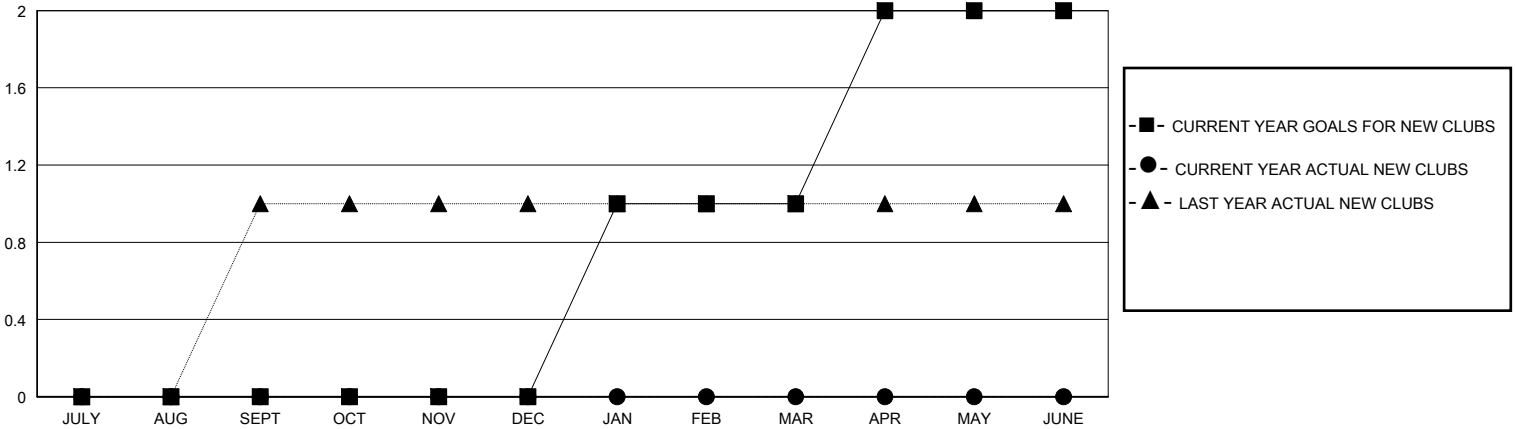
LOCATION CALIFORNIA

GMT CA

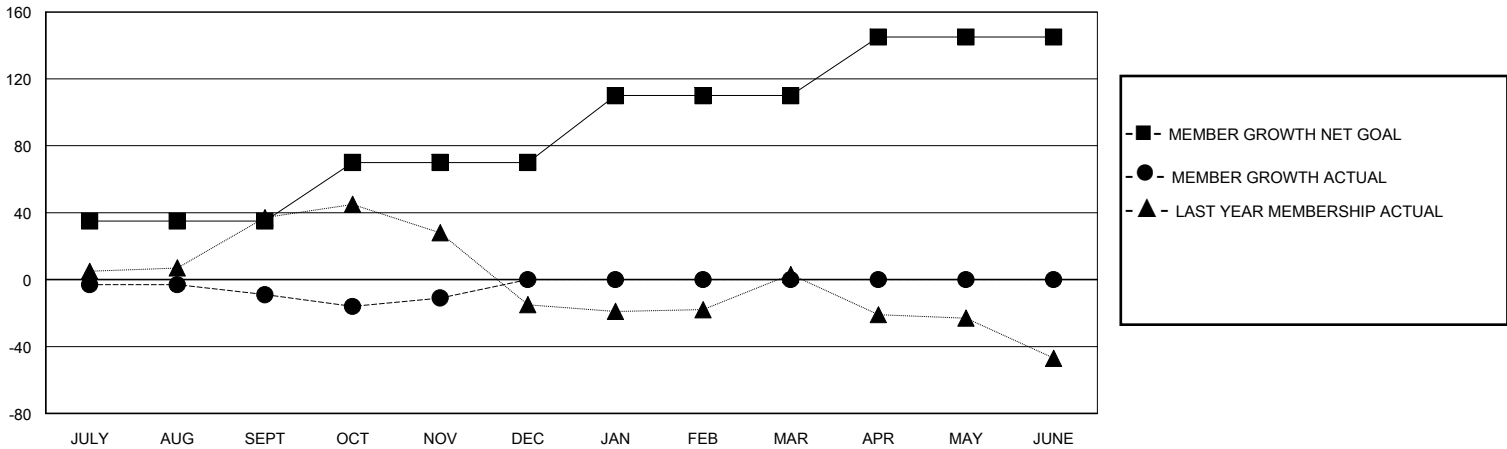
| Clubs | | | |
|-----------------------|---------------|-----------|---------------|
| RESULTS FOR 2024-2025 | | | |
| QUARTER | NEW CLUB GOAL | NEW CLUBS | DROPPED CLUBS |
| JULY/AUG/SEPT | 0 | 0 | 0 |
| OCT/NOV/DEC | 0 | 0 | 0 |
| JAN/FEB/MAR | 1 | 0 | 0 |
| APR/MAY/JUNE | 1 | 0 | 0 |

| Members | | | |
|-----------------------|------------------------|----------------------|--|
| RESULTS FOR 2024-2025 | | | |
| QUARTER | MEMBER GROWTH NET GOAL | MEMBER GROWTH ACTUAL | DROPPED MEMBERS ACTUAL (including transfers) |
| JULY/AUG/SEPT | 35 | 29 | 33 |
| OCT/NOV/DEC | 35 | 20 | 21 |
| JAN/FEB/MAR | 40 | 0 | 0 |
| APR/MAY/JUNE | 35 | 0 | 0 |

GOALS AND ACTUAL NEW CLUBS CUMULATIVE



GOALS AND ACTUAL MEMBERS CUMULATIVE



| | | |
|--|---|--|
| DROPPED CLUBS: 0 | 14 CLUBS OF 38 ADDED 1 OR MORE NEW MEMBERS | GENDER DISTRIBUTION MALE 500 (52.47%) FEMALE 452 (47.43%) |
| DROPPED MEMBERS DECEASED 9 CLUB CANCELLED 0 OTHER 44 TOTAL 53 | CLICK HERE FOR CUMULATIVE MEMBERSHIP DATA | TOTAL FAMILY UNIT MEMBERS 0 FAMILY MEMBERS PAYING HALF DUES 0 |